

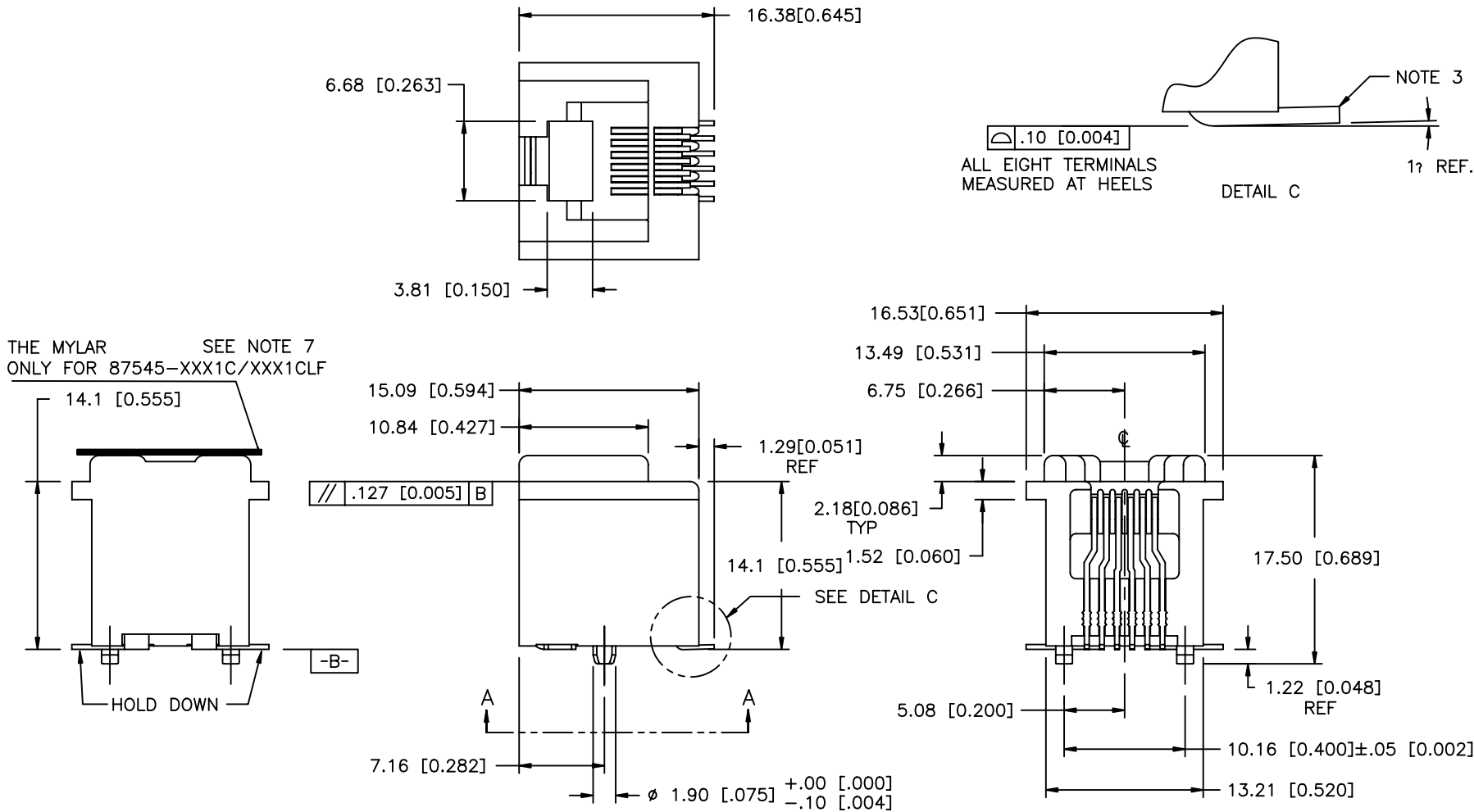
PRODUCT NO.

SEE TABLE

Tous droits strictement reserves. Reproduction ou communication a des tiers interdite sous quelque forme que ce soit sans autorisation ecrite du proprietaire. Propriete de c FCI. Droits de reproduction FCI.

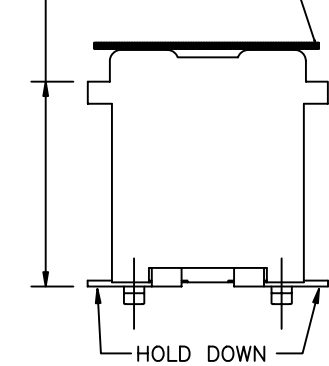


All rights strictly reserved. Reproduction or issue to third parties in any form whatever is not permitted without written authority from the proprietor. Property of FCI. Copyright FCI.



THE MYLAR ONLY FOR 87545-XXX1C/XXX1CLF SEE NOTE 7

14.1 [0.555]



HOLD DOWN

7.16 [0.282]

15.09 [0.594]

10.84 [0.427]

1.29 [0.051] REF

2.18 [0.086] TYP

1.52 [0.060]

14.1 [0.555]

SEE DETAIL C

16.53 [0.651]

13.49 [0.531]

6.75 [0.266]

17.50 [0.689]

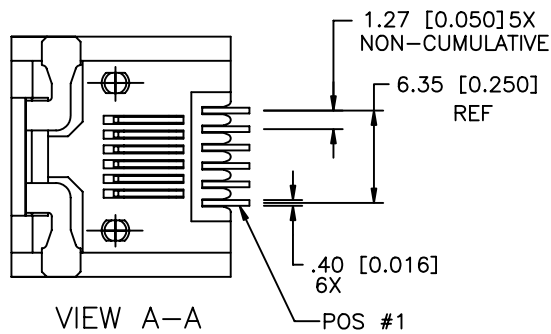
5.08 [0.200]

1.22 [0.048] REF

10.16 [0.400] ±.05 [0.002]

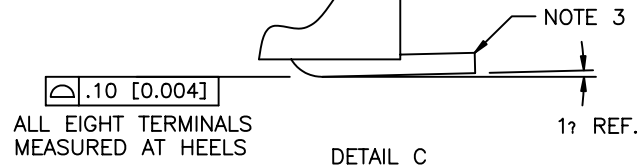
13.21 [0.520]

ø 1.90 [0.075] +.00 [0.000] / -.10 [0.004]



VIEW A-A

/// .127 [0.005] B



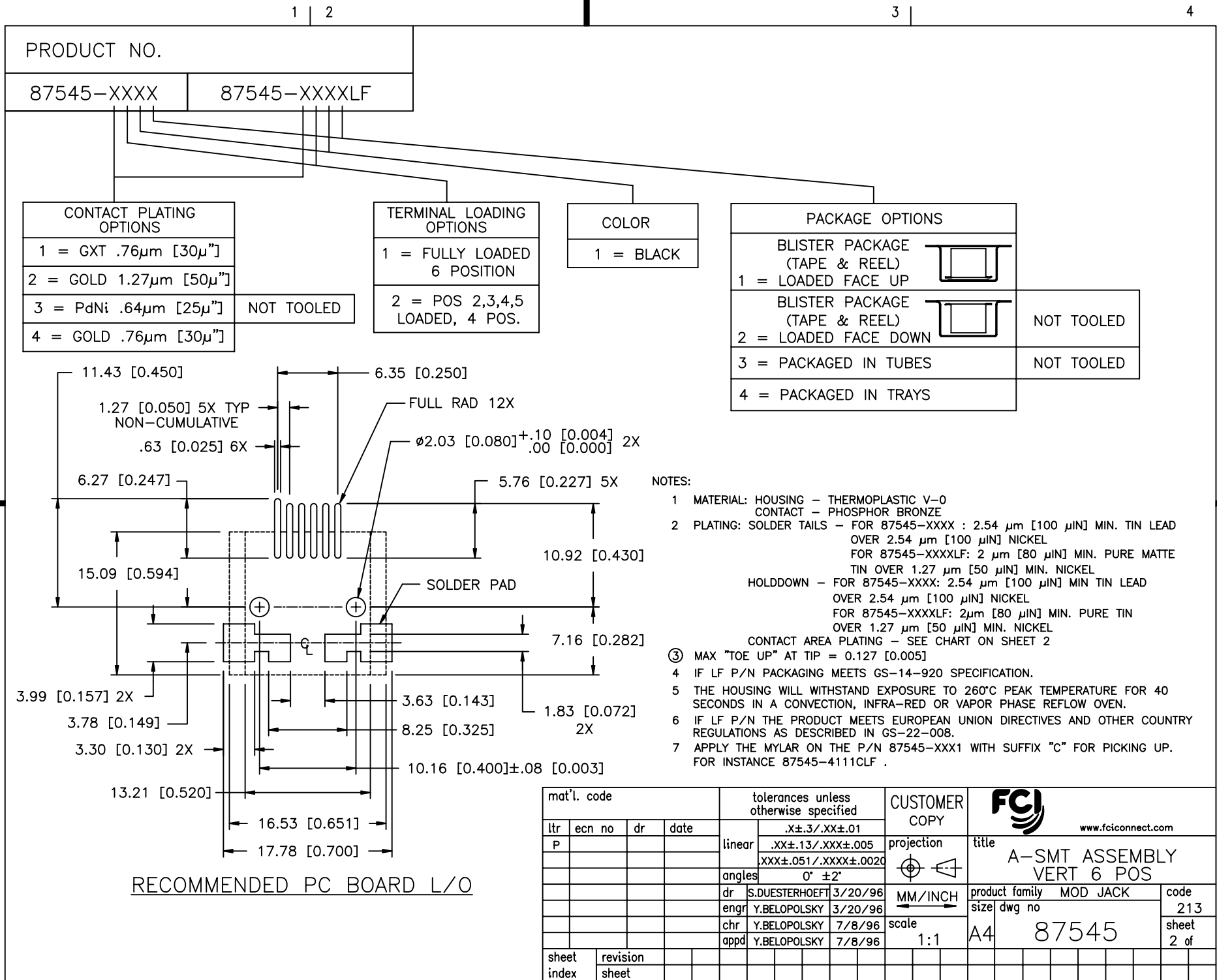
ALL EIGHT TERMINALS MEASURED AT HEELS
DETAIL C
NOTE 3
1 REF.

| | | | | | | | | |
|-------------|----------------|-----|----------|---------------------------------------|----------------------|---------------|------------------------------|----------------|
| mat'l. code | | | | tolerances unless otherwise specified | | CUSTOMER COPY | FCI www.fciconnect.com | |
| ltr | ecn no | dr | date | linear | .XX±.13/.XXX±.005 | projection | title | |
| J | V81474 | RGD | 9/15/96 | | .XXX±.051/.XXX±.0020 | | A-SMT ASSEMBLY VERT 6 POS | |
| K | V12666 | LP | 1/10/02 | angles | 0° ±2' | | MM/INCH | product family |
| L | N05-0035 | YS | 02/18/05 | dr | S.DUESTERHOEFT | 3/20/96 | code | 213 |
| M | N05-0142 | ZC | 6/2/05 | enr | Y.BELOPOLSKY | 3/20/96 | size | dwg no |
| N | N07-0217 | WG | 09/07/07 | chr | Y.BELOPOLSKY | 7/8/96 | scale | 1:1 |
| P | N08-0194 | SH | 09/08/09 | appd | Y.BELOPOLSKY | 7/8/96 | A4 | 87545 |
| sheet index | revision sheet | N | N | | | | | |
| | | 1 | 2 | | | | | |

Tous droits strictement réservés. Reproduction ou communication à des tiers interdite sous quelque forme que ce soit sans autorisation écrite du propriétaire. Propriété de c FCI. Droits de reproduction FCI.



All rights strictly reserved. Reproduction or issue to third parties in any form without the written permission of FCI. Copyright FCI.



| | |
|-------------|--------------|
| PRODUCT NO. | |
| 87545-XXXX | 87545-XXXXLF |

| CONTACT PLATING OPTIONS | |
|-------------------------|------------|
| 1 = GXT .76µm [30µ"] | |
| 2 = GOLD 1.27µm [50µ"] | |
| 3 = PdNi .64µm [25µ"] | NOT TOOLED |
| 4 = GOLD .76µm [30µ"] | |

| TERMINAL LOADING OPTIONS | |
|--------------------------------|--|
| 1 = FULLY LOADED 6 POSITION | |
| 2 = POS 2,3,4,5 LOADED, 4 POS. | |

| COLOR | |
|-----------|--|
| 1 = BLACK | |

| PACKAGE OPTIONS | |
|-------------------------------|------------|
| BLISTER PACKAGE (TAPE & REEL) | |
| 1 = LOADED FACE UP | |
| BLISTER PACKAGE (TAPE & REEL) | |
| 2 = LOADED FACE DOWN | NOT TOOLED |
| 3 = PACKAGED IN TUBES | NOT TOOLED |
| 4 = PACKAGED IN TRAYS | |

NOTES:

- MATERIAL: HOUSING - THERMOPLASTIC V-0
CONTACT - PHOSPHOR BRONZE
- PLATING: SOLDER TAILS - FOR 87545-XXXX : 2.54 µm [100 µIN] MIN. TIN LEAD OVER 2.54 µm [100 µIN] NICKEL
FOR 87545-XXXXLF: 2 µm [80 µIN] MIN. PURE MATTE TIN OVER 1.27 µm [50 µIN] MIN. NICKEL
HOLDDOWN - FOR 87545-XXXX: 2.54 µm [100 µIN] MIN TIN LEAD OVER 2.54 µm [100 µIN] NICKEL
FOR 87545-XXXXLF: 2µm [80 µIN] MIN. PURE TIN OVER 1.27 µm [50 µIN] MIN. NICKEL
CONTACT AREA PLATING - SEE CHART ON SHEET 2
- MAX "TOE UP" AT TIP = 0.127 [0.005]
- IF LF P/N PACKAGING MEETS GS-14-920 SPECIFICATION.
- THE HOUSING WILL WITHSTAND EXPOSURE TO 260°C PEAK TEMPERATURE FOR 40 SECONDS IN A CONVECTION, INFRA-RED OR VAPOR PHASE REFLOW OVEN.
- IF LF P/N THE PRODUCT MEETS EUROPEAN UNION DIRECTIVES AND OTHER COUNTRY REGULATIONS AS DESCRIBED IN GS-22-008.
- APPLY THE MYLAR ON THE P/N 87545-XXX1 WITH SUFFIX "C" FOR PICKING UP. FOR INSTANCE 87545-4111CLF .

| | | | | | | | |
|-------------|----------------|---------------------------------------|------|---------------|------------------------|---------------------------|------------------------------|
| mat'l. code | | tolerances unless otherwise specified | | CUSTOMER COPY | | FCI www.fciconnect.com | |
| ltr | ecn no | dr | date | linear | .X±.3/.XX±.01 | projection | title |
| P | | | | | .XX±.13/.XXX±.005 | | A-SMT ASSEMBLY VERT 6 POS |
| | | | | angles | .XXX±.051/.XXX±.0020 | MM/INCH | product family MOD JACK |
| | | | | dr | 0° ±2' | scale | code |
| | | | | enr | S.DUESTERHOEFT 3/20/96 | 1:1 | 213 |
| | | | | chr | Y.BELOPOLSKY 3/20/96 | A4 | size |
| | | | | chr | Y.BELOPOLSKY 7/8/96 | | 87545 |
| | | | | app | Y.BELOPOLSKY 7/8/96 | | sheet |
| sheet index | revision sheet | | | | | | 2 of |